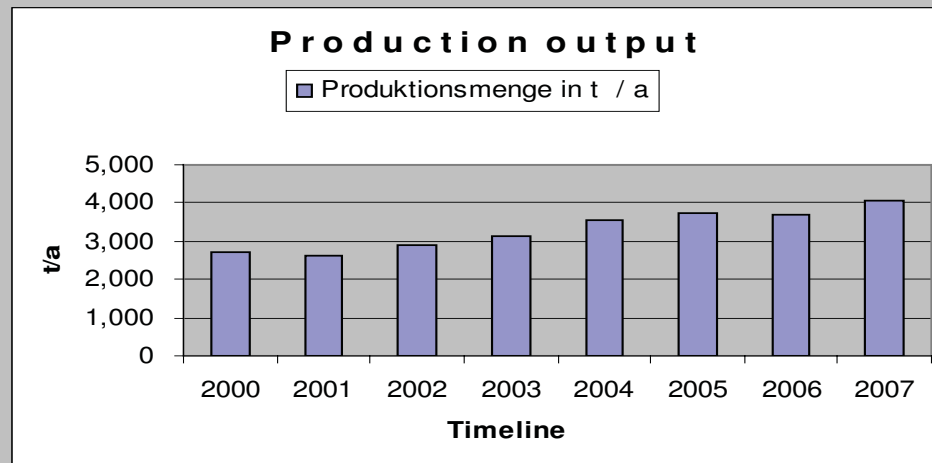


8.0 Company Data Index

8.1 Products in t / a

Output	ME	2000	2001	2002	2003	2004	2005	2006	2007	% change on 2006
--------	----	------	------	------	------	------	------	------	------	------------------

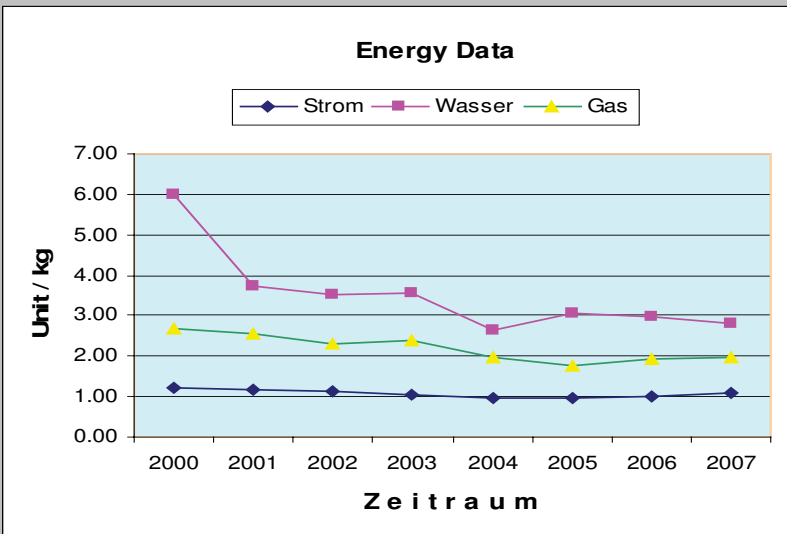
Products	t	2000	2001	2002	2003	2004	2005	2006	2007	% change on 2006
o Cleaning machines and ancillary products	t	2,714	2,639	2,889	3,149	3,567	3,745	3,726	4,063	9.04



8.0 Company Data Index

8.2 Energy Data Per Annum

Energy Source	2000	2001	2002	2003	2004	2005	2006	2007	% change- to 2006
Electricity in KWH / a	3,292,800	3,104,500	3,308,640	3,333,580	3,479,480	3,440,948	3,656,789	4,458,308	21.9
K1 KWH / kg	1.21	1.18	1.15	1.06	0.98	0.96	0.98	1.10	
Water in m³ / a	16,268	9,819	10,129	11,260	9,405	10,935	10,991	11,432	4.0
K2 L / kg	5.99	3.72	3.51	3.58	2.64	3.06	2.95	2.81	
Gas in kwh / a	7,277,879	6,741,546	6,657,377	7,562,508	7,006,967	6,641,323	7,162,712	8,098,975	13.1
K3 KWH / kg	2.68	2.55	2.30	2.40	1.96	1.86	1.92	1.99	



The manufacturing output (t/a) rose by circa 9% in real terms during the period of 2007 compared to 2006. Due to the rise in output a shift pattern had to be worked in certain areas of the production.

In comparison to 2006 this resulted in the following change to the energy consumption:

Water consumption increased slightly by 4%.

Gas consumption increased in real terms by 13.1%.

Electricity consumption rose by 21.9%.