

Hako

Clean ahead

**Superior technology
for individual transport logistics**

Manoeuvrable mini-transporters: Hako-Sherpa M and Hako-Sherpa MX



**Robust and strong, specialised for narrow lanes and passages.
Speeds up to 12 km/h.**

**Even more flexible
with the patented
piggyback system!**

Hako-Sherpa M and Sherpa MX – v transportation more economical!



It's faster using the
back
piggy
System

**e.g. the piggyback system using exchange platforms:
reverse up to it, secure the platform – click – and go.**

Many of transport solutions using the Hako principle are based on the demands of our customers. From these we develop suggestions appropriate to the specific or general applications, always taking the economics into account. For this reason, in the Sherpa class we provide three high performance vehicles, which could not be made more flexible or versatile:

- Hako-Sherpa M in the form of an electro-transporter with a 3.0 kW motor, loading platform, 0.5 tons payload, towing capacity up to 1.0 tons.
- Hako-Sherpa M in the form of an electro-transporter with a 3.0 kW motor, loading platform plus Hako piggyback system, 0.5 tons payload.
- Hako-Sherpa MX in the form of an electro-tractor with 3.0 kW motor, towing capacity up to 2 tons.

The Sherpa class is extended by a wide product range consisting of transport services ranging between 0.5 to 10 tons, and takes the lead in experience with electrical drives. Further advantages: a high quality standard as well as a close knit sales and service network.

Greater flexibility as a result of:

- designed either as an electro-tractor or electro-transporter or as a mobile workshop and tool transporter.
- all commonly available trailer coupling devices provided.
- rapid operation, indoors and outdoors
Optional: workplace illumination, 2 speeds, weather protection roof.



Rapid distribution with a conveyor belt and an Hako Sherpa trailer combination.



with these you can make

Hako

Clean ahead



Greater economy as a result of:

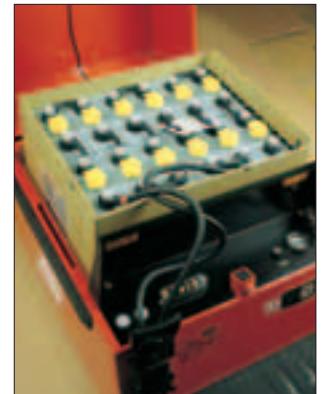
- excellent price/performance ratio
- long-life vehicle construction
- Hako financial consultation
- purchase, rental, leasing



Adjustable steering wheel.



A mobile team of cleaners provides rapid cleaning.



Traction battery Hako-Sherpa MX



Hako-Sherpa with special loading platform for varnished components.



The pulling power of attractive sales stands.



Also ideal for open air applications on consolidated tracks.



3,0 kW drive motor.

Greater performance as a result of:

- easy handling and ergonomic controls
- high driving comfort with hydraulically suspended body-contoured seat
- adjustable steering wheel (Sherpa M)
- adjustable steering wheel with 7:1 ratio powered (Sherpa MX)
- High performance DC motor, 3,0 kW



Solid steel frame with robust impact and foot protection.



With up to 2 tons being towed.

Hako-Sherpas delivering spare parts in the municipal rail depot.

Data, facts, options at a glance:

It's faster using the
back piggy
System

Hako-Sherpa MX

Hako-Sherpa M



The patented
Hako piggyback
system



matched to the Hako-Sherpa-M,
increases the loading platform
and shortens transport times
considerably. Even better with
several exchange platforms.

Voltage	24 V	24 V
Battery	320 Ah	130 Ah
Motor capacity	3,0 kW	3,0 kW
Length	1.825 mm	1.825 mm
Width	612 mm	612 mm
Height	1.150 mm	1.150 mm
Ground clearance	105 mm	105 mm
Turning radius	1.750 mm	1.750 mm
Tyres/air	4,00- 4,6 PR	4,00- 4,6 PR
Brakes	mechanical/electric.	mechanical/electric.
Unladen weight	200 kg	100 kg
Loading area LxB	400 x 570 mm	940 x 570 mm
Payload		500 kg
Trailer load	2.000 kg	1.000 kg
Speed	8 km/h	8 km/h / 12 km/h*
Steering	powered steering ratio 7:1	direct

* optional

In the interest of technical development we reserve the right to alter equipment without prior notice.

Whatever you have to tow, Hako builds trailers for your specific application.

Choice of kingpin steering or
fifth-wheel steering for payloads
between 0.5 and 6 tons.



Hako
Clean ahead

Hako-Werke GmbH
Hamburger Straße 209-239
D-23843 Bad Oldesloe
Phone: ++49 (4531) 806-0
Fax: ++49 (4531) 806-338
Internet: www.hako.com
e-mail: info@hako.com



The Hako sales and service office
is always close at hand.