



**For almost any textile floor
covering**

Area coverage: up to 150 m²/h

**Low degree of residual moisture
on the floor**

Cleanserv C34

Compact carpet cleaning machine

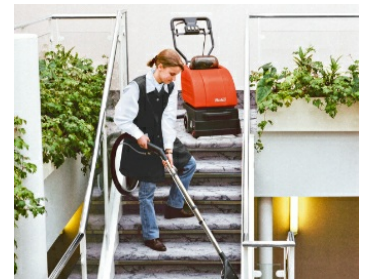
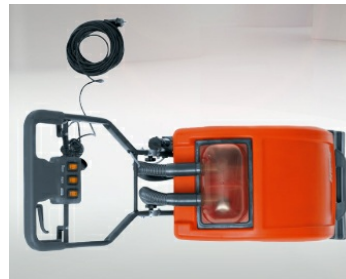
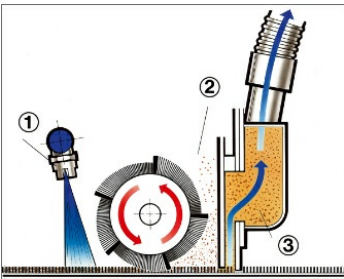


The compact walk-behind carpet cleaner Cleanserv C34 is a genuine powerhouse. Equipped with extremely efficient technology, this machine is ideal for cleaning small to medium-sized areas fast and reliably. Its cylindrical brush system allows working on almost all textile floors. Two squeegees providing a high suction performance ensure that only a minimum of residual moisture remains on the floor. After a short drying time, the cleaned area can be used again.



Special features

Designed with much attention to detail



Efficient working – only one working step required:

1. Sprays the cleaning solution onto the floor.
2. Cleans the carpet mechanically by means of a cylindrical brush.
3. Vacuum until dry.

Ease of use:

All operating elements are in clear view and within easy reach of the user. The water supply can be dosed manually. The operating handle is adjustable and collapsible to allow easy transport.

Highly economic:

The tank can be used to full capacity to ensure maximum area coverage.

Accessories for all purposes:

A wide range of accessories is available for the Cleanserv C34 – e.g. tools to clean upholstery, confined areas or stairs.

Technical data

Cleanserv C34 at a glance

Cleanserv C34

Working width	cm	33
---------------	----	----

Effective vacuum width	cm	37
------------------------	----	----

Max. theoretical area performance	m ² /h	150
-----------------------------------	-------------------	-----

Operating mode (mains)	Volt/Hz	230V / 50
------------------------	---------	-----------

Nominal input	W	1300
---------------	---	------

Cable length	m	20
--------------	---	----

Type of propulsion		manual
--------------------	--	--------

Brush speed	U/min	510
-------------	-------	-----

Solution / recovery tank	l	32/33
--------------------------	---	-------

Length / height (above the operating handle) cm		93-107 / 86-96
---	--	----------------

Width / weight	kg	44 / 39
----------------	----	---------