

Cleaning Technology
Municipal Technology
Waterjet Technology

Hako



Cleaning Technology
Cleanliness without compromise

High-tech. Service. Management.



Cleaning technology with a systematic approach

Sweeping, vacuum sweeping, scrubbing and drying – we develop cleaning technology for demanding tasks in building and outdoor cleaning. What matters is not only the performance output per square metre, but also user satisfaction in day-to-day work. To ensure our machines deliver in practice, we combine robust quality, sophisticated technology and continuous innovation with comprehensive service expertise. The result is machines that operate reliably, save resources and make day-to-day work noticeably easier.

Always the right solution

From walk-behind and ride-on sweepers and vacuum sweepers to scrubber-driers and high-performance combination solutions: our portfolio covers a wide range of applications. We are constantly refining our machines – always with a focus on efficiency, ease of use and sustainability.

Contents

Sweepmaster	4	X-AC front and rear drive	21
Sweepmaster (Walk-behind sweepers and vacuum sweepers)	6	Sustainability	22
Sweepmaster (Ride-on vacuum sweepers)	8	Quick-Connect-System	23
Scrubmaster	10	Hako-Fleet-Management	24
Scrubmaster (Autonomous scrubber-drier)	12	App Hako Connect	25
Scrubmaster (Walk-behind-scrubber-driers)	14	Hako-Service	26
Scrubmaster (Ride-on scrubber-driers)	18		
Scrubmaster B400 R Series (Ride-on scrubber-driers and combi machines)	20		



Sweepmaster

- Walk-behind sweepers and vacuum sweepers with area outputs of between 2,300 and up to 4,350 m²/h
- Ride-on vacuum sweepers with area outputs of up to 16,200 m²/h
- Superior cleaning performance for both in- and outdoor areas
- Powerful filter systems provide reliable dust control
- Service- and maintenance-friendly



Effective dust filter

The cassette filter system with large filter surface and patented R²S filter cleaning technology ensures clean exhaust air and long operating times.



Particularly convenient

The Take-it-Easy hopper system of the Sweepmaster 650 enables easy emptying with just one hand.



Easy changing of the cylinder

Changing the sweeping cylinder is particularly easy; no tools needed.



Two working steps in a single cleaning pass

Hako's quick-connect system allows upgrading of the Sweepmaster models 900 R and 980 R/RH with a "light debris collector" tool. Coarse dirt can be picked up manually with a gripper directly from the machine and collected in the litter bin.



The side broom jacket Dust Stop (option) reduces the development of dust and fine particulates during dry sweeping by up to 90% in comparison to conventional side brooms.



Scan the code to learn more about Dust Stop

Side broom

The side broom jacket Dust Stop can be retrofitted easily – no technical installation required! Unlike conventional dust control systems, Dust Stop uses no water, which means: no streaky floors! In comparison to working with naked bristles, Dust Stop minimises the danger of debris being catapulted out of the sweeping path. Sweeping close to walls or racks is possible without restrictions – and without damaging any objects.

Highlights:

- Allows dust-reduced sweeping
- Reduces fine dust and noise pollution
- No use of water
- Easy handling
- No additional energy consumption (rotates with the side broom)

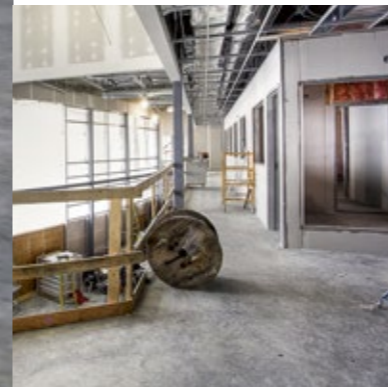
Easy emptying

The two dirt hoppers can be removed separately and emptied with ease. The hopper lifting system is particularly easy to operate and allows checking the filling level or throwing coarse pieces of debris into the hoppers at any time.



Reliably cleaned surfaces

Thoroughly removing dirt, dust and light debris: these are the tasks carried out by the machines of Hako's Sweepmaster product line. From a manual sweeper for cleaning small areas to vacuum sweepers providing area outputs of up to 4,350 m² per hour, these compact walk-behind sweepers are the right choice when it comes to cleaning workshops and exhibition or production halls as well as for light-duty outdoor cleaning operations. In addition to battery-powered versions, the models Sweepmaster 650 and 800 are also available with petrol-powered drives. Large-capacity dirt hoppers and powerful filter systems ensure highly efficient cleaning results.



Sweepmaster Walk-behind sweepers and vacuum sweepers



Sweepmaster M600

Technical data		M600
Working width with 1 SB	cm	67
Theoretical area output	m ² /h	2,300
Manual drive		manual
Working speed	km/h	4
Dirt hopper capacity	l	40
Length	cm	133-155
Width	cm	79
Height above the seat (handle bar) / overhead guard	cm	90/106
Total weight, ready for use	kg	24



Sweepmaster B500

Technical data		B500
Working width with 1 SB	cm	60
Theoretical area output	m ² /h	2,400
Manual drive		battery
Working speed	km/h	4
Dirt hopper capacity	l	40
Length	cm	80-100
Width	cm	70
Height above the seat (handle bar) / overhead guard	cm	60/120
Total weight, ready for use	kg	56



Sweepmaster 650

Technical data		650
Working width with 1 SB	cm	70,5
Theoretical area output	m ² /h	3,525
Manual drive		battery/petrol
Working speed	km/h	5
Dirt hopper capacity	l	35
Length	cm	120
Width	cm	68,5
Height above the seat (handle bar) / overhead guard	cm	71.5/100
Total weight, ready for use	kg	105-122



Sweepmaster 800

Technical data		800
Working width with 1 SB	cm	87
Theoretical area output	m ² /h	4,350
Manual drive		battery
Working speed	km/h	5
Dirt hopper capacity	l	50
Length	cm	120
Width	cm	85
Height above the seat (handle bar) / overhead guard	cm	71.5/100
Total weight, ready for use	kg	112-165



Drive, sweep, vacuum

Hako's range of ride-on vacuum sweepers comprises various different models: from a compact and highly manoeuvrable machine to a universal model providing an area output of 16,200 m² per hour. Efficient dust filter systems provide a filtering degree of 99.5%, the optimised vacuum system binds both dust and dirt particles effectively. The comprehensive range of accessories available offers customers the right solution for almost any sweeping task in trade and industry or in commercial contract cleaning.



**Sweepmaster
Ride-on vacuum sweepers**



Sweepmaster B800 R



Sweepmaster 900 R



Sweepmaster 980 R/RH



Sweepmaster 1200 RH



Sweepmaster 1500 RH

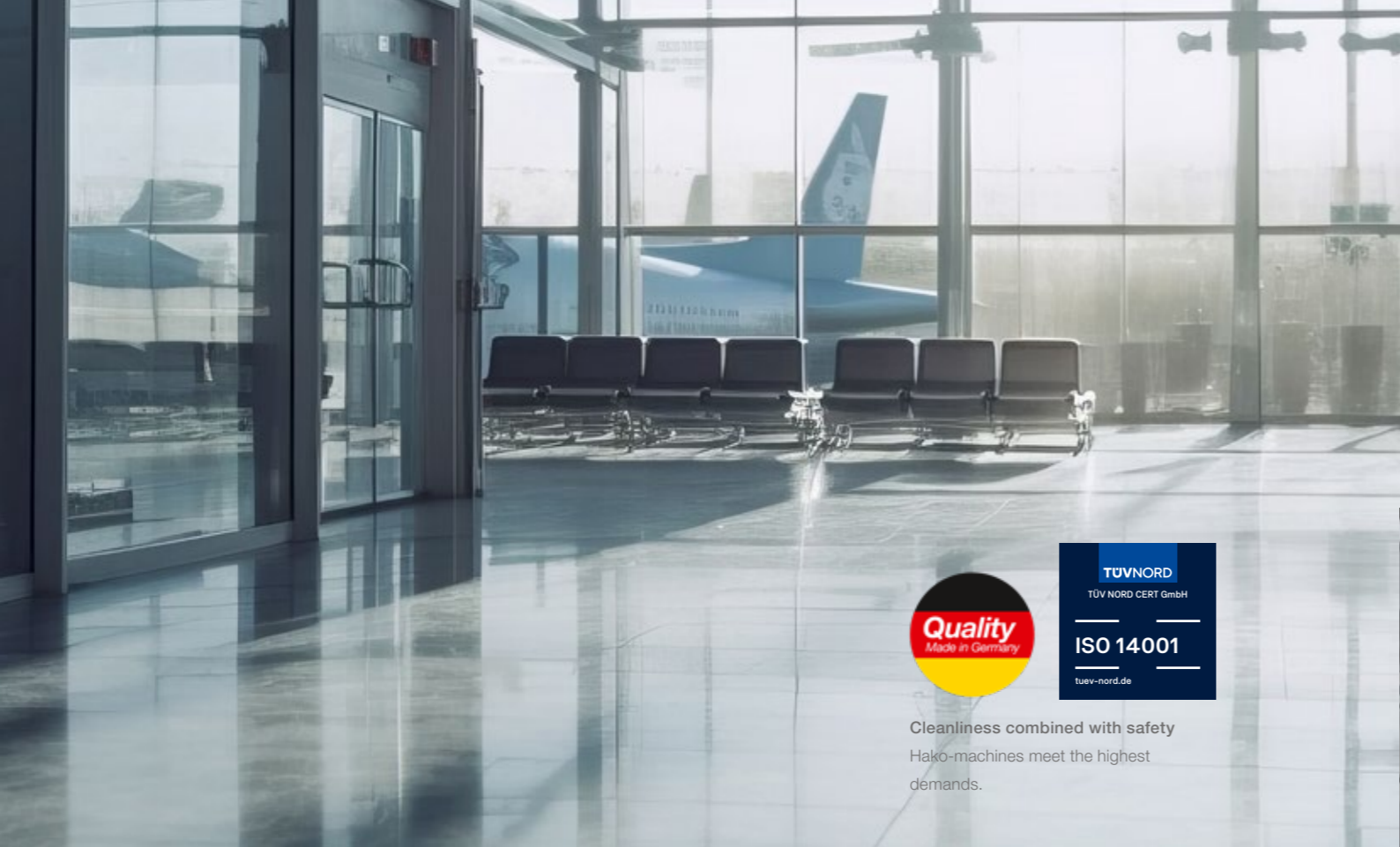
Technical data		B800 R
Working width with 1 SB / 2 SB	cm	89/110
Theoretical area output	m ² /h	5,340/6,600
Manual drive		battery
Working speed	km/h	6
Dirt hopper capacity	l	50
Length	cm	128
Width	cm	90.8-99.8
Height above the seat (handle bar) / overhead guard	cm	124
Total weight, ready for use	kg	282

Technical data		900 R
Working width with 1 SB / 2 SB	cm	95/120
Theoretical area output	m ² /h	5,700/7,200
Manual drive		battery
Working speed	km/h	6
Dirt hopper capacity	l	60
Length	cm	150
Width	cm	100
Height above the seat (handle bar) / overhead guard	cm	133
Total weight, ready for use	kg	370-460

Technical data		980 R/RH
Working width with 1 SB / 2 SB	cm	95/120
Theoretical area output	m ² /h	5,700/7,200
Manual drive		battery/petrol
Working speed	km/h	6
Dirt hopper capacity	l	60/75
Length	cm	150
Width	cm	100
Height above the seat (handle bar) / overhead guard	cm	133/200
Total weight, ready for use	kg	380-620

Technical data		1200 RH
Working width with 1 SB / 2 SB	cm	116/147
Theoretical area output	m ² /h	9,300-13,200
Manual drive		battery/diesel
Working speed	km/h	8/9
Dirt hopper capacity	l	130
Length	cm	199.8
Width	cm	114.2
Height above the seat (handle bar) / overhead guard	cm	152/199.9
Total weight, ready for use	kg	763-1100

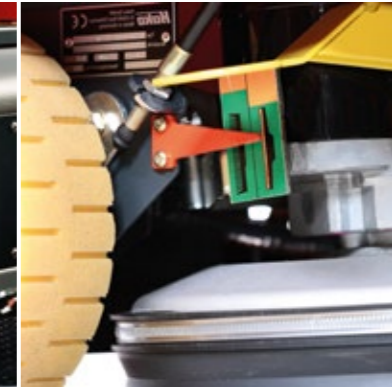
Technical data		1500 RH
Working width with 1 SB / 2 SB	cm	127/162
Theoretical area output	m ² /h	10,200-16,200
Manual drive		battery/diesel
Working speed	km/h	8/10
Dirt hopper capacity	l	250
Length	cm	223
Width	cm	133.5
Height above the seat (handle bar) / overhead guard	cm	159/198.5
Total weight, ready for use	kg	1100-1715



Cleanliness combined with safety
Hako-machines meet the highest demands.

Technical benefits in every detail

Hako machines are equipped with elaborated technical features to provide maximum safety and ease-of-use. Components such as brushes and sweeping units can be changed quickly and easily. All operating displays are clearly arranged and provide detailed information on the cleaning functions and the battery status. Both the on-board chargers and batteries can be charged at any conventional power outlet.



Intuitive operation:

Pictograms on the operating panel enable a quick overview and make it easy to select the functions – in every work situation. Another feature providing ease-of-use: the 1-button operating system activates all the cleaning functions at the push of a button.

Provides more safety when handling chemicals:

Depending on the quantity of water applied in the cleaning process, the on-board dosing system automatically adds just the right amount of cleaning chemicals – and the system is fully integrated into the machine design.

Everything at a glance and within easy reach

Sufficient material thickness of the brushes and pads is essential to ensure permanently good cleaning results. The mechanical wear indicator shows the operator when it is time to change the brush or pad. Scanning the QR code gives the user full access to the entire machine data on the operating panel. Even service orders can be placed directly from the cockpit.

Scrubmaster

- Economically efficient wet cleaning: the machines provide area outputs of between 1,400 and up to 14,000 m²/h
- Benefits both the environment and your budget: Hako-AquaControl for a more economical use of water and chemicals
- Innovative tank technology for long operating times
- Suitable cleaning components for every type of floor
- Service- and maintenance-friendly



With Eco mode

With low levels of soiling, the machines can be operated efficiently and in an environmentally friendly manner with less power to minimise noise emissions and save energy.



Lighting

For better visibility, for example when working in outdoor areas, the Scrubmasters can be fitted with lighting equipment.



Everything at a glance

The large 4.3-inch colour display shows all key information. The chemical dosage is also conveniently adjustable.

Back-friendly overall machine concept

Hako's ride-on Scrubmasters have been awarded the quality label by Aktion Gesunder Rücken e.V. (AGR). This makes Hako the first manufacturer worldwide to have received this accolade for its scrubber-driers! The award includes ergonomic details such as an individually adjustable comfort seat, clearly arranged controls and a height- and tilt-adjustable steering wheel.





Scrubmaster B75 i Autonomous scrubber-drier

The Scrubmaster B75 i cleans learned routes autonomously, reliably and safely. The 3D camera system and certified LiDAR sensors not only enable efficient navigation, but also compliance with safety standards. Operation and learning new routes are as simple as they are intuitive. Another advantage: For quick cleaning jobs in between, the Scrubmaster B75 i can also be operated manually as a conventional walk-behind scrubber-drier – and is particularly ergonomic thanks to the extendable handle.



Options for more efficiency:

The docking station for battery charging, recovery tank emptying and solution tank filling with fresh water as well as the Clean Guard front shield for unimpeded cleaning in areas with increased coarse dirt.



Intelligent cleaning

Mapping technologies allow routes to be recorded and stored during the cleaning journey. The machine can be intuitively operated and programmed via an 8-inch touchscreen. The Scrubmaster B75 i effectively increases productivity as it can autonomously perform cleaning tasks at any time of the day or night – efficiently and safely, saving time and resources.

The right system:

Equipped with a disc brush system or a cylindrical brush unit and two additional side brooms with Dust Stop for dust- and fine particulates-reduced sweeping.



Innovative cleaning robot

Reliable safety sensors, 3D cameras and collision protection systems detect obstacles and ensure that the machine avoids people or objects in time. The data is also safe: In order to protect the data collected during teach-in and the cleaning journey, all EU regulations are complied with during storage and evaluation.

Highlights:

- Autonomous driving and cleaning with innovative, image-processing technology
- Simple, intuitive route learning
- Compliance with safety standards
- With disc or cylindrical brush
- Can also be used as a conventional walk-behind scrubber-drier
- Ergonomic in manual operation
- Optionally with Hako-AntiBac® for use in hygiene-sensitive areas

Technical data	
Working width disc brush/cylindrical brush	65/54 cm
Effective squeegee width	76 cm
Theoretical area output disc brush	2,340 m ² /h
cylindrical brush	1,980 m ² /h
Battery	Lithium
Theoretical running time (math. calc.)	120 to 180 min
Solution tank	75l
Recovery tank	75l
Total weight max. (depending on battery)	330 kg
Dimensions:	
	Length 105 cm
	Width (above bumper) 74.5 cm
	Height at the operating handle 120 cm



Scrubmaster Walk-behind scrubber-driers

With working widths of 33 to 43 cm and an area output of up to 1,900 m²/h, the walk-behind scrubber-driers in the smaller performance range improve the cleaning quality on small to medium-sized areas. At the same time, they are so compact, light and easily manoeuvrable that they can even reach into narrow areas. And to increase area accessibility even further, our product developers have implemented a number of brilliant features: from the Hako-Delta-Cleaning-System of the Scrubmaster B5 to the adjustable operating handle of the Scrubmaster B25, which also can be folded.



Practical: the optional storage box for cleaning or other utensils and the optional mop holder.



Scrubmaster B5

With its Hako-Delta-Cleaning-System, the Scrubmaster B5 makes even narrow and angled areas accessible for machine-assisted cleaning – with great agility, excellent manoeuvrability and little effort on the part of the operator. The flat, delta-shaped cleaning head enables cleaning close to walls, right into corners and under superstructures with a floor clearance of as little as 120 mm. And the ergonomic, dynamic operating handle optimally supports the user in his/her movements.



Scrubmaster B5

Technical data		B5
Working width	cm	43
Theoretical area output	m ² /h	1,300
Solution/recovery tank	l	5/5
Width squeegee	cm	-
Battery capacity	Ah	12.8
Running time	min	60
Weight	kg	21



Scrubmaster B8

Technical data		B/E8
Working width	cm	33
Theoretical area output	m ² /h	1,320
Number/type of brushes		1/cylindrical brush
Brush speed	RPM	800
Solution/recovery tank	l	8/8
Width squeegee	cm	45
Battery capacity	Ah	10/20
Running time	min	60
Weight with/without battery	kg	30.5-37.7

Scrubmaster B12

Technical data		B12
Working width	cm	38
Theoretical area output	m ² /h	1,500
Number/type of brushes		1/disc brush
Brush speed	RPM	130
Solution/recovery tank	l	16/22
Length with squeegee	cm	80
Width without/with squeegee	cm	47
Height	cm	-
Total weight, ready for use	kg	80

Scrubmaster B25

Technical data		B25
Working width	cm	43
Theoretical area output	m ² /h	1,700
Number/type of brushes		1/disc brush
Brush speed	RPM	210
Solution/recovery tank	l	30/30
Length with squeegee	cm	126.5
Width without/with squeegee	cm	50/76
Height	cm	109,5
Total weight, ready for use	kg	179-190



Compact, fast, efficient

With a wide range of working widths, high area outputs of up to 4,200 m² per hour and numerous options for more working comfort, efficiency and hygiene, the walk-behind scrubber-driers in the larger performance range offer the right solution for every application. The comfortable operation, the optimal view of the working environment and the ergonomic design ensure perfect working conditions.



Scrubmaster Walk-behind scrubber-driers



Easy disc brush change

The automatic, tool-free brush ejection and pick-up system facilitates daily service work on the machine.

Scrubmaster B35

Technical data		B35*
Working width DB	cm	46
Theoretical area output DB	m ² /h	1,840-2,070
Type of brush		disc
Solution/recovery tank	l	35/35
Width squeegee	cm	76
Battery capacity Li-Ion	Ah	54
Battery capacity GiV	Ah	76
Running time	min	83-137
Weight with battery	kg	150-188

Scrubmaster B50

Technical data		B50*
Working width DB	cm	56
Theoretical area output DB	m ² /h	2,240-2,520
Type of brush		disc
Solution/recovery tank	l	50/50
Width squeegee	cm	86
Battery capacity Li-Ion	Ah	54-100
Battery capacity GiV	Ah	76-105
Running time	min	76-217
Weight with battery	kg	165-223

Scrubmaster B70

Technical data		B70
Working width	cm	60-85
Theoretical area output	m ² /h	3,000-4,200
Number/type of brushes		1-2/disc brushes/ cylindrical brushes
Brush speed	RPM	185/850
Solution/recovery tank	l	72/74
Length with squeegee	cm	153-171
Width without/with squeegee	cm	68-88/95-110
Height	cm	115
Total weight, ready for use	kg	325-393

Scrubmaster B90 CL

Technical data		B90 CL
Working width	cm	85
Theoretical area output	m ² /h	4,200
Number/type of brushes		2 disc brushes
Brush speed	RPM	185
Solution/recovery tank	l	85/85
Length with squeegee	cm	164
Width without/with squeegee	cm	88/110
Height	cm	115
Total weight, ready for use	kg	480

* The Scrubmasters B35 and B50 are each available as a basic model with Powerflow drive and as a premium model with propulsion (auto drive).



For larger-scale operations

Working widths of between 55 and 123 cm. For narrow aisles in high-bay warehouses or large halls. Scrubbing and drying or sweeping and vacuuming in a single working step. An ergonomic workplace with superior operating comfort and an optimal view onto the working area. Thanks to their sophisticated technology, Hako's ride-on scrubber-driers can clean between 3,000 and 8,600 m² of floor space per hour – for a wide range of possible applications.



Different brush units for every type of floor

Available are cylindrical brushes with additional pre-sweep function for coarsely textured floors, and disc brushes for smooth to medium-textured floors, including a wide range of working materials such as brushes, pads and microfibre.

Optionally available for the Scrubmaster models B175 R and B260 R

The pre-sweep unit collects loose dirt prior to wet-cleaning the floor to save laborious pre-cleaning. The overhead guard provides increased safety.

Scrubmaster Ride-on scrubber-driers



Scrubmaster B75 R

Technical data		B75 R
Working width	cm	55-65
Theoretical area output	m ² /h	3,000-3,500
Number/type of brushes		1/2/disc brushes
Brush speed	RPM	180
Solution/recovery tank	l	75/75
Length with squeegee	cm	147
Width without/with squeegee	cm	72-76/86
Height	cm	121
Total weight, ready for use	kg	389-447



Scrubmaster B120 R

Technical data		B120 R
Working width	cm	70-90
Theoretical area output	m ² /h	4,800-5,800
Number/type of brushes		2/disc brushes/ cylindrical brushes
Brush speed	RPM	210/850
Solution/recovery tank	l	120/120
Length with squeegee	cm	167
Width without/with squeegee	cm	81-95/ 96-112
Height	cm	148
Total weight, ready for use	kg	707-738



Scrubmaster B175 R

Technical data		B175 R
Working width	cm	85-108
Theoretical area output	m ² /h	5,950-7,560
Number/type of brushes		2/disc brushes/ cylindrical brushes
Brush speed	RPM	210/850
Solution/recovery tank	l	175/175
Length with squeegee	cm	189
Width without/with squeegee	cm	94-112/ 113-129
Height	cm	145/208
Total weight, ready for use	kg	1,000-1040



Scrubmaster B260 R

Technical data		B260 R
Working width	cm	108-123
Theoretical area output	m ² /h	7,560-8,610
Number/type of brushes		2-3/disc brushes/ cylindrical brushes
Brush speed	RPM	210/640
Solution/recovery tank	l	260/260
Length with squeegee	cm	202
Width without/with squeegee	cm	115-129/129
Height without/with overhead guard	cm	149/209
Total weight, ready for use	kg	1,350-1,410



Hako's Scrubmaster ride-on scrubber-driers have been designed as mobile, ergonomic workplaces. They are the first ride-on scrubber-driers worldwide to have been awarded the AGR (Aktion Gesunder Rücken e.V.) quality label for their back-friendly overall machine concept.





Configurable in every detail

The demands put on professional cleaning technology products are just as individual as their application areas. Each of our Scrubmaster B400 R Series models can therefore be upgraded with a wide range of individual extras and tools – for more efficiency, flexibility and safety at work.



Technical data		B400 R/RM/RH 1230	B400 R/RM/RH 1550
Working width scrubbing	cm	123	155
Squeegee width	cm	136	166
Theoretical area output	m ² /h	11,000	14,000
Max. climbing capacity in cleaning mode without/with X-AC	%	6/15	6/15
Working speed	km/h	8-9	8-9
Brush system/number of brushes		disc brushes/3	disc brushes/3
Brush pressure	kg	55/75/95	80/110/140
Solution and recovery tank capacity	l	400	400
Take-it-Easy system/manual emptying* High dump**	l	2 x 44 150	2 x 44 150
Nominal voltage	V	36	36
Total output	kW	14,7	16
Battery capacity max.	Ah	540/810	540/810
Length with squeegee	cm	202/281/281	202/281/281
Width without/with squeegee	cm	130/136	160/166
Height without/with overhead guard	cm	150/212	150/212
Weight, ready to use, without driver	kg	2.110/2.260/2.420	2.130/2.280/2.440
Noise level at the operator's ear	dB(A)	68/74/74	68/74/74

*Scrubmaster B400 RM **Scrubmaster B400 RH

Scrubmaster B400-R Series

The Scrubmaster B400 R Series ensures long, uninterrupted working and a high area output of up to 14,000 m²/h: thanks to the 400-litre solution and recovery tank as well as the maximised battery capacity provided by the optional battery changing system. Equipped with a 3-disc-brush unit, which is available in working widths of 123 cm or 155 cm, and many extras as a standard, this machine series is ready for any major cleaning task.



Scrubmaster B400 RH
Vacuum sweeper & scrubber-drier combi machine with high dump



Scrubmaster B400 RM
Vacuum sweeper & scrubber-drier combi machine for manual emptying with Take-it-Easy system



Scrubmaster B400 R
Scrubber-drier

X-AC front and rear drive

Scrubmaster ride-on scrubber-driers can be equipped with an electronically modulating X-AC front and rear drive, which provides improved traction in cleaning mode. Our X-AC variants can effortlessly clean ramps and inclines without any loss of performance. This enables cleaning not only of level floors but also of ascending and descending surfaces in a single cleaning pass, which saves both time and costs.

X-AC front and rear drive variants



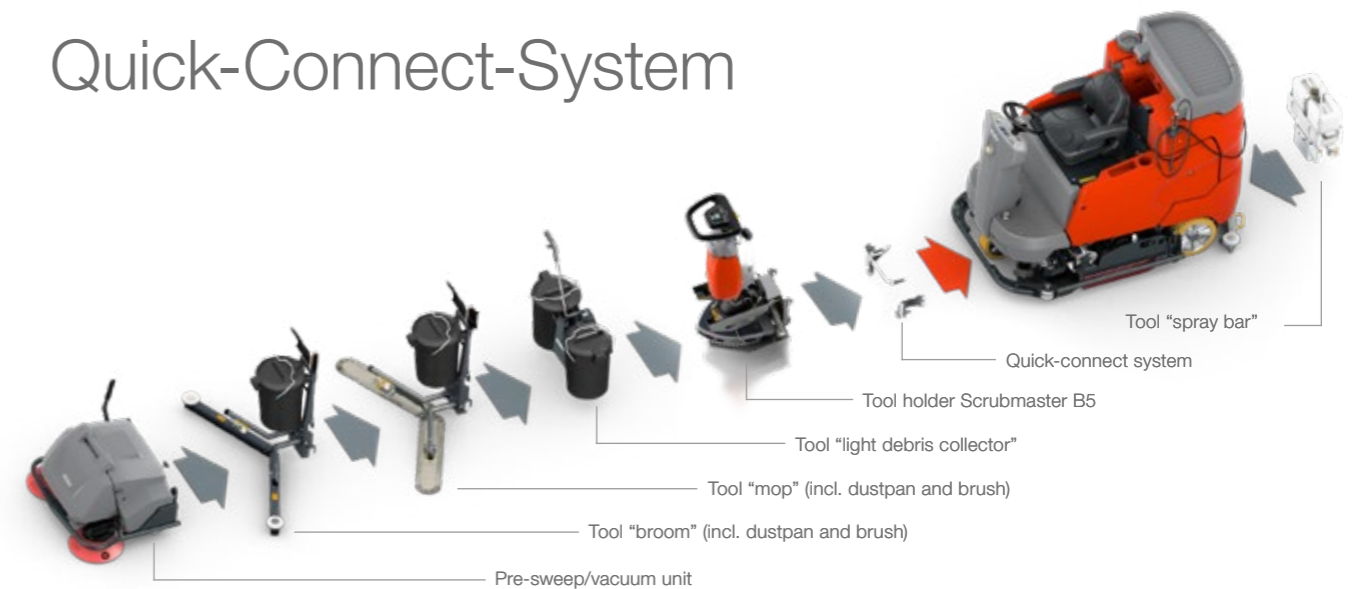
X-AC	B175 R	B260 R	B400 RH	B400 RM	B400 R
Disc brush 900 mm	•				
Disc brush 900 mm + pre-sweep/vacuum unit	•				
Cylindrical brush + side broom	•				
Cylindrical brush + pre-sweep/vacuum unit	•				
Disc brush 1,080 mm HD		•			
Cylindrical brush + side broom		•			
Cylindrical brush + pre-sweep/vacuum unit		•			
Disc brush 1,230			•	•	•
Disc brush 1,550			•	•	•



The cleaning chemicals, which are specially formulated for Hako machines, are both environmentally and health friendly – while achieving brilliant results even at low dosages.



Quick-Connect-System



Sustainability that makes a difference

At Hako, efficient cleaning means more than just high performance. The machines embody a responsible approach to resource use – from durable construction and the use of post-consumer recyclates to technical solutions. Precise water and chemical dosing, energy-optimised drive systems and high-quality components significantly reduce consumption and emissions in daily use.



Hako-AntiBac®

The antibacterial tank feature ensures reduced fungal and bacterial development and reduces both odour development and the consumption of disinfectants for tank cleaning.



Hako-AquaControl

Thanks to the intelligent brush system with water retention device, Hako-AquaControl saves up to 50% water during operation.



Hako Eco mode

With low levels of soiling, the machine can be operated with less power to minimise working noise and to save energy.



Hako-LessChem

Saves cleaning chemicals and protects the environment: prevents incorrect dosing and ensures reliably good cleaning results with only small amounts of chemicals – thanks to Hako's dosing and filling systems.

System-based application diversity!

Hako's quick-connect system makes cleaning processes in certain environments even more efficient. It allows uncomplicated upgrading of vacuum sweepers and scrubber-driers with pre-cleaning tools and tools for special applications to carry out several working steps in a single cleaning pass.

Cleaning and disinfecting with Hako

Selected Hako machines can also be equipped with tools for special applications installed at the rear of the machine to carry out various different cleaning tasks including surface disinfection or effortlessly removing oil spills and tyre marks.

	Scrubmaster					Sweepmaster
	B75 R	B120 R	B175 R	B260 R	B400 R	980 R/RH
Quick-Connect-System			•	•	•	•
Pre-sweep/vacuum unit			•	•		
Tool "broom"			•	•	•	
Tool "mop"			•	•	•	
Tool "light debris collector"			•	•	•	•
Tool "spray bar"	•	•	•	•		
Tool holder B5			•	•	•	•



Flexible co-driver: with a special holder, the Scrubmaster B5 can be easily taken on board and transported to the next job site.

ERP-based fleet presentation

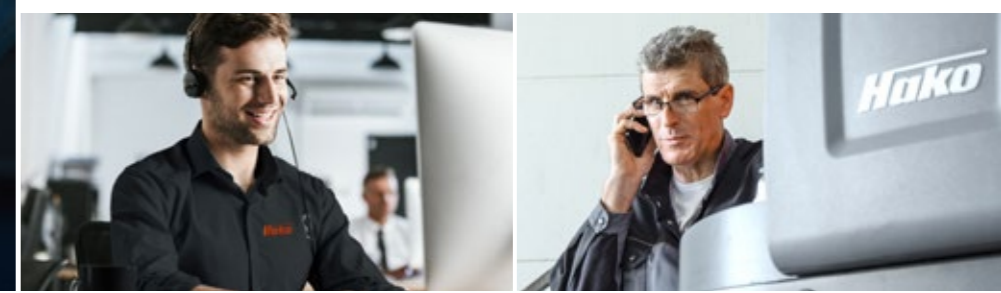
Full version incl. live machine data

Optional machine access management (for view.X.live)

Scan and get started
Of course, only authorised users have access to Hako Fleet-Management – your data is password protected.

Three modules, one goal: the efficiency of your fleet!
The view.X.live module offers full access to all functions, features and content of Hako Fleet Management – optionally in a package with the electronic machine access authorisation entry.X for a comprehensive overview and increased security. The light version view.X allows you to use the core functions with a clear, ERP-based fleet visualisation.

From immediate support to predictive maintenance
If the worst comes to the worst, service notifications can be sent directly from the portal. The current machine status and service codes are immediately transmitted to service technicians in your area – traceable for you in the system at all times. This means that an expert with the right Hako original spare parts is quickly at your site. With modern technology and data analysis, Hako Fleet Management can also predict maintenance requirements and act proactively before breakdowns occur. This increases machine availability and reduces service costs, extends machine life and thus contributes to sustainability in fleet operation.



Hako-Fleet-Management

As the size of the machine fleet increases, so does the importance of effective management. Hako Fleet Management helps you to manage your fleet efficiently, coordinate its deployment and keep an eye on all relevant key figures in real time. As a central machine management tool, it ensures fully automated transparency and provides the data basis for optimising the use of resources. For increased efficiency, reduced costs and more sustainable fleet management.

Highlights

- Cost transparency and control
- High machine availability
- Prevents machine damage
- Performance records
- Efficiency analysis
- Optimised fleet management
- Management of mixed fleets through an interface to third-party providers such as ToolSense



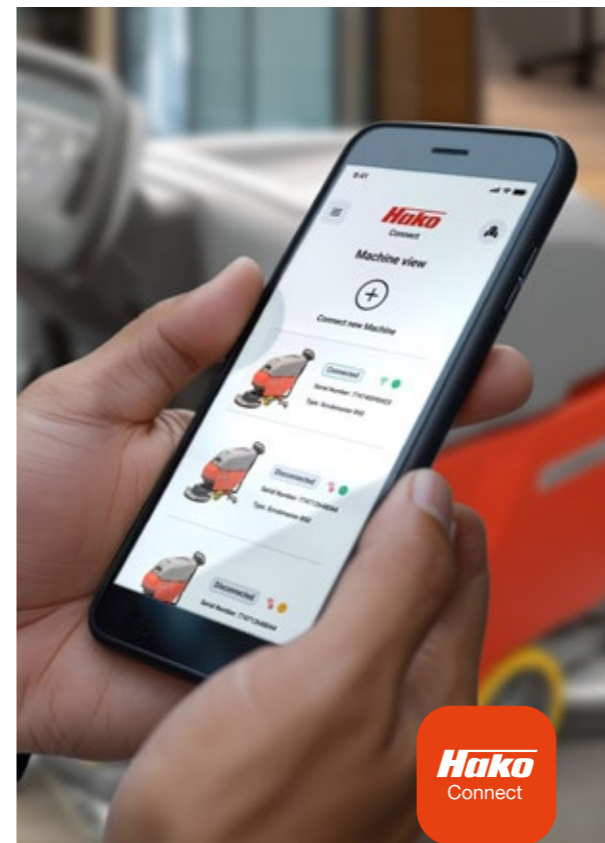
More graphics, improved visualisations and interactive analyses for faster insights

Smart-ready: App Hako Connect

The Hako Connect app makes cleaning even easier: Your smartphone or tablet connects directly to the scrubber-drier via Bluetooth and clearly displays key operational and status data. All recorded data is synchronised with the cloud and is then also available to other owners of the machine. This allows users to keep track of usage, status and performance at all times – and to efficiently manage and document cleaning processes.

What Hako Connect offers:

- Fast and reliable Bluetooth connection
- Live machine status
- Overview of operating and status data
- Customised cleaning profiles
- Documentation of usage and resources
- Service requests directly from the app
- Remote diagnostics for faster support
- Documents and FAQs – available offline too



Service from the professionals makes the difference!

Excellent service from Hako turns a premium quality machine into a top solution that fulfils all your requirements: with competent service technicians in the field, in fully equipped workshops, with a regular contact person and with uncomplicated, solution-oriented processing of your service requests.



Customer service – full availability, full security

Our qualified service technicians are available for you around the clock. Another big plus: our efficient spare parts logistics, which delivers spare parts overnight if the worst comes to the worst.

Customised and scalable services for:

- Maximum machine availability and high efficiency
- Cost transparency and greater cost-effectiveness
- Improved quality of results
- Sustainability in use and through extended service life and value retention of your machine



220 mobile service technicians with the shortest response times

- Qualified service technicians – optimally prepared thanks to efficient deployment planning
- Fully equipped service vehicles with suitable spare parts for all common service cases
- Fast and professional troubleshooting



Service is our DNA

Your satisfaction is our benchmark. That's why you get much more than a top product from Hako: you get a solution that always fits perfectly; to suit you, your goals, the area of application and our machines.

Renting instead of buying!

- Short-term hire for increased flexibility – the fleet can be quickly adapted to changing needs
- Always the latest technology at hand
- Lower investment costs and thus protection of liquidity
- Cost certainty and predictability
- All-round carefree package with maintenance and service contracts





Hako

For a clean future

Cleanliness is more than just an excellent cleaning result. In fact, it starts long before that: with the development of our products, and with every idea that makes our machines even more resource-saving and efficient and keeps the environmental impact as low as possible throughout the entire, long product life. That is why we are constantly driving our research and development further in the direction of efficiency-increasing and even more environmentally friendly measures, as well as important future topics such as digitalised processes and autonomous driving. So that cleanliness is not only visible, but becomes an exciting experience!

Hako GmbH
Hamburger Str. 209-239
23843 Bad Oldesloe
Tel. +49 4531 806-0
info@hako.com
www.hako.com



We are also active in the field of Municipal Technology and Waterjet Technology

We offer a comprehensive solution programme in the professional outdoor cleaning segment: from flexible, highly manoeuvrable city sweepers and compact, multifunctional implement carriers and transporters for all-season use to efficient waterjet technology for industrial and commercial application.



Blue Competence is an initiative of VDMA (www.vdma.org). By engaging in this partnership, we are committed to comply with the twelve sustainability principles applied in the field of mechanical and system engineering (www.bluecompetence.net/about).

For the sake of readability, Hako has opted for gender-neutral terminology throughout this document. This includes all people, regardless of their gender or identity.

About our products: We reserve the right to make changes to the shape, colour and design in the interest of technical development. Illustrations may contain optional extras. Services and products may vary from country to country.